

CHINA HOTELS

Your accommodation during our Classic Tours and Immerse Yourself Tours is selected for convenience of location, comfort or character and can range from a business hotel in one city to a family run guesthouse in a smaller town.

Beijing



▲ Jiangxi Grand Hotel

Can be found in the Fengtai district, outside the 3rd Ring Rd.

Grand GongDa JianGuo Hotel

A stylish property close to China's World Trade Centre and the campus of the Beijing University of Technology.

Mecure Beijing Downtown

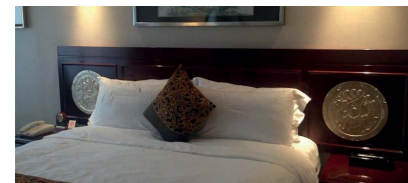
Located on Xi Da Wang Road in the CBD, this hotel has free Wifi, and indoor swimming pool with fitness centre.

Xian



▲ Golden Flower

Positioned 6km from the Bell Tower in downtown Xian and 3km from Xian Railway Station.



▲ Grand Dynasty Culture Hotel

In the centre of Xian, you will be located just a short walk from the old City Wall and the Muslim Quarter.



▲ Yulong International Hotel

This hotel is located in the Weiyang District area of Xian, close to the City Wall.

Shanghai



▲ Jin Jiang Hua Ting Hotel and Towers

Located right on a subway station, this hotel, with elegant rooms and great views, is just 1km from Hengshan Road.

Jiulong Hotel

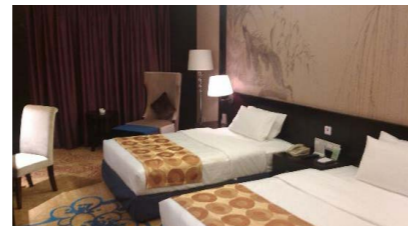
Just a 20-minute walk from the famous Bund, this hotel is well located amongst Shanghainese neighbourhoods.



▲ Regal Shanghai East Asia Hotel

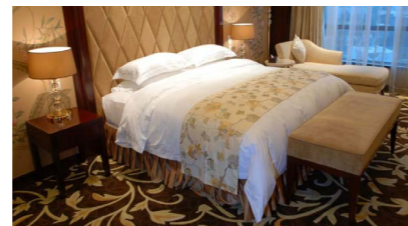
Located in the Shanghai Stadium complex. Wi-fi is complimentary for guests.

Chengdu



▲ Xin Liang Hotel

Located in Jinjiang district, just 500m from Chunxi Road, the hotel features free Wifi.



▲ Sichuan Hotel Main Building

Comfortable and centrally located, this hotel is only 200 metres from the city centre.

Guilin



▲ Lijiang Waterfall Hotel

Located close to the Li River, this property is conveniently situated in Guilin.

Universal Hotel

Positioned in the city centre, next to the Li River and within walking distance to the night markets.

Yangshuo



▲ Elite Garden Hotel

Just a 5-minute walk to the Li River, located near West Street and surrounded by retail options.



▲ New Century Hotel

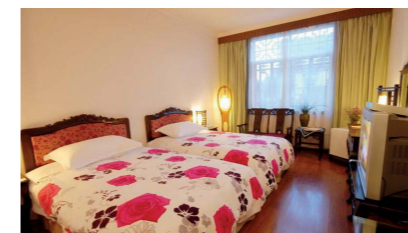
Located in downtown Yangshuo, close to the bustling markets and cobblestone lanes of West Street.

Lijiang

Adange Hotel

This well-located hotel is an easy walk to many of Lijiang sights and set in the peaceful business area of the city.

Dali



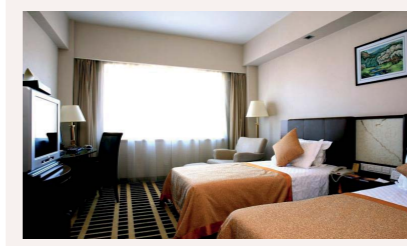
▲ Landscape Hotel

Centrally located, the lively Foreigners' Street and Jiang Gong Ci are an easy walk from this traditional-style hotel.



▲ KUNMING

Kunming



▲ Jin Jiang Hotel

Located in the centre of Kunming's business district, close to the railway station.

Suzhou



▲ Pan Pacific Suzhou

Located only 500m to the city centre, and just 2km from Guanqian St. A 5-star property with 2 swimming pools.

Hangzhou



▲ Culture Plaza Hotel Zhejiang

This hotel is located in a residential district within easy reach of Hangzhou's city centre.

Zhongdian

Zhaxidele Hotel

Located only 1 kilometre from the heart of the city, this hotel is perfectly located for your explorations of the area.

Lhasa, Tibet

▲ Tibet Hotel

With traditional Tibetan architecture, this hotel is a convenient base to explore Lhasa.

Hotels on our group tours are generally rated as local three to four-star standard, but please note that there is no international classification system for hotels and differences in facilities and quality may exist between Australia and China.



Hotels and their amenities are subject to change. Your confirmed hotels will be advised with your final documentation.



▲ SUZHOU