



VIETNAM & CAMBODIA DISCOVERY

Go Beyond Tour | 20 Days | Physical Level 3

Hanoi – Hoang Su Phi – Halong Bay – Hoi An – Hue – Saigon –
Mekong Delta – Siem Reap

Discover two fascinating countries. Hike through the verdant rice terraces of Hoang Su Phi and taste the street food in Hanoi before heading south to discover Hoi An, Hue and Saigon. Your journey ends in Cambodia with an exploration of Angkor Wat.

- Taste Hanoi's delightful cuisine
- Hike lush rice terraces
- Kayak on stunning Halong Bay
- Learn traditional farming techniques in Hoi An
- Ride pillion on a vintage Vespa on a night time foodie tour of Saigon
- Discover Angkor by tuk tuk
- See local life on Tonle Sap

TOUR MAP



VIETNAM & CAMBODIA DISCOVERY TOUR INCLUSIONS:

- Return international economy flights, taxes and current fuel surcharges (unless land only is selected)
- All accommodation
- Meals as stated
- All sightseeing and entrance fees
- All transportation and transfers
- English speaking National Escort (if your group is 10 or more passengers) or Local Guides
- Vietnam & Cambodia visa fees for Australian passport holders (please see visa section below for further information)
- Specialist advice from our experienced travel consultants
- Comprehensive travel guides

The only things you may have to pay for are personal expenditures e.g., drinks, optional excursions or shows, insurance of any kind, tipping, early check-in or late checkout and other items not specified on the itinerary.

GO BEYOND TOURS:

Venture off the beaten track to explore fascinating destinations away from the tourist trail. You will discover the local culture in depth and see sights rarely witnessed by other travellers. These tours take you away from the comforts of home but will reward you with the experiences of a lifetime. These tours include:

- Walking through classic sites
- Unique cultural experiences and encounters
- Off the beaten track destinations
- More evenings at leisure for independent exploration

PHYSICAL LEVEL 3:

All our tours feature a physical rating to help you select the right holiday for you. To travel on any of our tours requires unaided mobility and the ability to stroll around the sights.

‘Vietnam & Cambodia Discovery’ is rated as a **physical level 3** tour. A good level of fitness is required as you need to be comfortable walking for several hours and covering longer distances. Walking or other activities such as cycling will be at a gentle pace and will involve straightforward terrain but may be at an incline.

- There will be both short and long periods of walking whilst sightseeing
- In Hoang Su Phi, you will be hiking up to 5 hours each day
- In Hue and the Mekong, there will be bicycle tours, which can involve cycling over uneven ground
- On some days, there will be long periods of driving, particularly between Hanoi and Hoang Su Phi
- Throughout the itinerary, you will be required to get on and off varying sizes of boats

Of course, our National Escorts and local guides will always endeavour to provide the highest level of service and assistance; however, they cannot be expected to cater for customers who are unfit to complete the itinerary.

JOINING YOUR TOUR:

The tour is 20 days in duration including international flights.

Travellers booked on a ‘Land Only’ package, the price includes your arrival/departure airport transfers if arriving/departing on the start and conclusion date of your tour. Please advise your international flight times to our reservations team.

Join the tour on Day 1 in Hanoi and end the tour on Day 19 in Siem Reap Please refer to your final itinerary for more specific meeting instructions pertaining to your departure.

ITINERARY CHANGES:

We intend to adhere to the day-to-day itinerary as printed; however, the order of events or sightseeing may change as we look to improve our tours, or as dictated by local conditions. In these circumstances, we will endeavour to make the best possible arrangements whilst maintaining the integrity of your trip.

DETAILED ITINERARY**Days 1: Fly to Hanoi**

Meals: D

Fly to Hanoi, where you will be met at the airport in the arrival hall by your Local Guide or National Escort. Together with all other group members who may be arriving at a similar time, you will transfer 45 minutes to your hotel and check into your room or store any luggage if arriving prior to check-in time. There is no sightseeing today.



Early check-in is not included. Additional nights before and after your tour can be arranged. Please contact our Reservations team to book.

Destination Information

Hanoi – With a population of approximately four million, Hanoi is a charming and richly historic city of lakes, shaded boulevards and leafy open parks. The centre is an architectural museum piece housing groups of ochre coloured buildings evoking the atmosphere of provincial French towns of the 1930s.

Day 2: Hanoi

Meals: B, L, D

Start your morning with a wander through Ba Dinh Square and visit the Ho Chi Minh complex, passing the final resting place of Uncle Ho and the House on Stilts. Next, learn about Vietnam's ethnic minorities at the Ethnology Museum before visiting the Confucian Temple of Literature. Take a walking tour of Hanoi's exciting Old Quarter before taking a light stroll along Hoan Kiem Lake, a great place to people watch. Sightseeing in central Hanoi involves approximately 4 hours on foot.



This evening, take a walking tour of the city's unique street-side night life and food vendors. Taste the varied flavours of Vietnamese street food such as Pho Cuon and barbecued beef.

In case of rain, the street food tour itinerary may include a visit to a covered noodle stall. The Ethnology Museum is closed on Mondays and on Vietnamese New Year; if your visit falls on these days, you will go to the Vietnamese Women's Museum as an alternative.

Destination Information

Ho Chi Minh Mausoleum – Is a large memorial, located in Ba Dinh Square. It is the final resting place of Ho Chi Minh, who announced Vietnam's independence in the same location in 1945.

Ethnology Museum – At the Ethnology Museum you will learn about the minority groups of Hanoi, including the black and red H'mong hill people. The museum is made up of an inside and outside area. The outside area displays traditional Vietnamese houses.

Temple of Literature – Dating back to 11th century, the Temple of Literature has long played an important centre for Confucianism and scholarly learning.

Day 3: Hoang Su Phi

Meals: B, L, D

After breakfast travel approximately 9 hours to Hoang Su Phi, one of northern Vietnam's emerald green rice terrace areas, stopping en route for lunch. The rest of the day is at leisure to begin exploring.

In Hoang Su Phi you will be staying in a local eco lodge. Please be aware that accommodation here is basic and the hot water for showers is solar powered so may not always be reliable.



You will need to pack a smaller bag for your 3-night trip to Hoang Su Phi. Main luggage will be left in safe storage at the hotel in Hanoi and picked up on your return.

Destination Information

Hoang Su Phi – Home to spectacular rice terraces, lush valleys and rugged mountains, Hoang Su Phi is an explorer's dream and Sapa's lesser known, but equally spectacular counterpart.

Day 4: Panhou

Meals: B, L, D

Hike for approximately 4 hours today to visit Tay village, through the spectacular countryside, you will walk over some uneven surfaces and at times at an incline. You will walk along the Chay river, pass through the dam, enjoy rice paddies and mountain scenery while walking to Tay Village where you can discover more local culture. Enjoy lunch at the one of the houses of the Tay people, before walking back to the lodge.



Please ensure you have sturdy and comfortable walking shoes as mountain trails can become slippery in wet weather.

Day 5: Panhou

Meals: B, L, D

Today leave Pan Hou with your guide to explore the nearby mountains through rice terraces. Walk through a local market before hiking along the trail and see a panorama view of terrace paddies fields. By necessity, the local people have sculpted the mountainside and use its water courses to grow rice. These laborious adjustments, which enable them to live in the heights, offer you some unique landscapes to contemplate.



In crop season, their fields look like pieces of curved mirror. Later in rice season, they have various green and yellow colours with different tones which made them a vivid picture. After a few hours of trekking, take a break in a village of the Red Dao for lunch. Then we continue our discovery of the local vegetation while trekking back to Panhou.

Today's walking time will total a duration of approximately 4-5 hours.

Day 6: Hoang Su Phi – Hanoi

Meals: B, L

Travel 9 hours back to Hanoi and enjoy the rest of your day at leisure.

**Day 7: Hanoi – Halong Bay**

Meals: B, L, D

Drive around 2 and a half hours today from Hanoi to Halong, where you will take an overnight cruise to the far-most corners of the bay. Boarding your boat could involve navigating your way over and through other boats, moored between it and the dock, sometimes without handrails, ladders or assistance from staff.



Enjoy lunch onboard as you cruise out into the bay, stopping to anchor for an afternoon of activities (which are subject to change due to cruise selection and weather conditions). Sightseeing includes visiting underground caves on the islands, which require climbing up and down steps inside and outside of the caves. End the day on deck with a drink in hand to watch the sunset over the bay followed by a freshly prepared dinner, before retiring to your cabin for the night.

Please note: You will need to pack a smaller overnight bag for your trip to Halong Bay. Main luggage will be left in safe storage at the hotel in Hanoi and picked up on your return.

Please also note: Weather conditions may delay the departure time of your cruise, or in rarer cases your cruise may be cancelled. Notifications of any delays or cancellations may not be known until your group's arrival in Halong Bay. If your cruise is cancelled after your arrival in Halong Bay, you will have lunch in Halong City and return to Hanoi. If notification of the cruise cancellation is given prior to your departure for Halong Bay an alternative day trip will be arranged to Hoa Lu and Tam Coc or 'Halong Bay on Land', an area located approximately 2 hours from Hanoi. Our guides will make every effort to inform the group at the earliest possible moment should there be any itinerary changes.

Destination Information

Halong Bay – Compared to the landscape of the limestone islets of Guilin in China and Krabi in southern Thailand, Halong Bay shares a common border with China in the north and harbours some of the most stunning scenery in Vietnam. Unique rock sculptures jut out dramatically from the clear emerald waters of the Gulf of Tonkin and numerous grottoes have created an enchanting, timeless world, looking out onto the horizon with the sails of the passing junks completing the picture.

Day 8: Halong Bay – Hoi An

Meals: B, D

Start your day on deck with a relaxing Tai Chi session whilst you admire an amazing sunrise over the karst scenery. Spend the morning sailing through Halong Bay. After brunch return to Hanoi for your 1 hour and 20-minute flight to Danang, and continue by road to Hoi An.



Destination Information

Hoi An – Perhaps more than any other place in Vietnam, Hoi An retains the feel of centuries past. Once known as Faifo, Hoi An was an influential port along the Silk Road. For over 500 years merchants from China, Japan, France and Portugal settled in the prosperous town resulting in a distinctive blend of culture, cuisine, religion and architecture. In 1999, the town was declared a UNESCO World Heritage listed site for having the most unique architecture in Southeast Asia.

Day 9: Hoi An

Meals: B, L

Hop on your bike today and wheel through the scenic rice paddies outside Hoi An. Pay a visit to local farmers where you can try your hand at traditional farming techniques and look out for water buffalo! Enjoy a calming boat ride to a peaceful fishing village, where you can try making a fishing net and go paddling in unique bamboo basket boats.

**Day 10: Hoi An – Hue**

Meals: B, L

Enjoy a leisurely walk past Chinese traders' houses, local artists and the 16th century Japanese Bridge. Drive for 3 to 4 hours to Hue, stopping en route at the Museum of Cham Sculpture. This journey will take you over the scenic Hai Van Pass.

**Destination Information**

Museum of Cham Sculpture – Located on the Han River, the Museum of Cham Sculpture is the world's largest collection of Cham architecture. The Cham people are an ethnic group of Southeast Asia, living in Cambodia and Vietnam.

Japanese Covered Bridge – First constructed in the 1590s to link the Japanese and Chinese quarters of the town. This iconic pink hued bridge has been restored to its former splendour.

Hue – Having been the imperial capital from 1802 until 1945 after the last emperor abdicated; Hue is still regarded as the centre of Vietnam's culture and religion. The city is dominated by the Imperial Citadel that is modelled on the Forbidden City in China. There are many wonderful pagodas and temples of high significance and it contains the Grand Tombs of the Nguyen Emperors.

Day 11: Hue

Meals: B, L

Cycle through Hue for a tour of the imperial sights. The tour lasts from around 08:30 to 16:00, stopping for lunch and at the sites, the roads are mostly flat. Start at the imperial City, then continue to An Hien Garden House, part of Hue's legacy from the Nguyen Dynasty.

Return to your bike and stop at Thien Mu Pagoda which overlooks the Perfume River. Drive to Tu Duc Tomb, a sprawling compound with lakes, waterways and walkways connecting different memorials. From here, take a cyclo tour along the banks of the Perfume River.

**Destination Information**

Imperial Citadel – A walled fortress accompanied by cannons, artilleries and surrounded by a moat for protection. Inside the Citadel are numerous gates, courtyards and the Forbidden Purple City.

Thien Mu Pagoda – This seven-storey octagonal tower built on a hillock, overlooking the Perfume River is Hue's oldest and most beautiful pagoda.

Day 12: Hue – Saigon

Meals: B, D

Spend the morning at leisure before transferring to Hue airport for your 1-hour flight to Saigon. This evening, you will be driven around Saigon on the back of a vintage Vespa with an experienced driver. Stop for a cocktail before tasting mouth-watering dishes in Chinatown, District 4 and the backstreets of Saigon.

**Destination Information**

Saigon – Saigon is one of the world's truly cosmopolitan cities with a history, culture and style obtained from colonial France, ancient China and the art deco era. Once the main port of Cambodia's Mekong territory, Saigon became the capital of France's Cochinchina and later the capital of the Republic of Vietnam. It remained the capital of South Vietnam until reunification at the end of the American War in Vietnam in 1975, when the capital was moved to Hanoi.

District 4 – Saigon's smallest district, and once the home to the Nam Cam mafia, District 4 is now vibrant and interesting area to explore, bursting with historic charm and streets lined with sidewalk restaurants selling delicious authentic Vietnamese dishes.

Day 13: Saigon

Meals: B, L, D

This morning drive 2 hours to discover the amazing network of the Cu Chi Tunnels. Sightseeing here involves 2 hours on foot on uneven paths through the bush and, if you choose, crawling through some of the tunnels.

Continue to Reunification Palace and the iconic Central Post Office, and view the façade of the Notre Dame Cathedral before visiting the War Remnants Museum. This is an emotive museum which you are invited to explore at your own pace. Sightseeing in central Saigon will be approximately 3 hours.



Please note: The Notre Dame Cathedral is undergoing ongoing renovations, due to be completed in 2027. During this time we are unable to enter the Cathedral; however, it can be viewed from the outside.

Destination Information

Cu Chi – The tunnels of Cu Chi are an immense network of connecting underground tunnels located in the Cu Chi district of Ho Chi Minh City (Saigon), Vietnam, and are part of a much larger network of tunnels that underlie much of the country. The Cu Chi tunnels were the location of several military campaigns during the Vietnam War, and were the Viet Cong's base of operations for the Tet Offensive in 1968. The tunnels were used by Viet Cong soldiers as hiding spots during combat, as well as serving as communication and supply routes, hospitals, food and weapon caches and living quarters for numerous North Vietnamese fighters. The tunnel systems were of great importance to the Viet Cong in their resistance to American forces, and helped to counter the growing American military effort.

Reunification Palace – Built on the site of the former Norodom Palace, is a landmark in Ho Chi Minh City, Vietnam. It was designed by architect Ngô Viết Thụ and was the home and workplace of the President of South Vietnam during the Vietnam War. It was the site of the end of the Vietnam War during the Fall of Saigon on 30th April 1975, when a North Vietnamese Army tank crashed through its gates.

War Remnants Museum – Comprised of numerous buildings displaying military equipment, photographs and artefacts relating to the Vietnam War from 1961-1975. This museum illustrates a harrowing period in this nation's history.

Day 14: Saigon – Mekong Delta

Meals: B, L, D

Head south for 2 hours to Ben Tre, gateway to the Mekong Delta. Here, you will take a boat ride on the river, observing daily life and the beautiful scenery, passing by the mangrove and palm trees along the riverbank. Visit a handy brickkiln, a coconut processing workshop and a candy workshop.



Continue boating through the winding natural canal whilst discovering the rural countryside. Visit a farmer's house making sleep mats. Take a bicycle on paths to a local house for lunch and continue on a rowing boat along the canal. Ride on coconut tree-shaded paths through the village.

You will need to pack a smaller overnight bag for your trip to the Mekong Delta. Main luggage will be left in safe storage at the hotel in Saigon and picked up on your return.

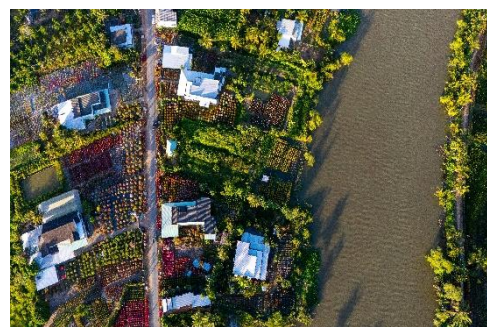
Destination Information

Mekong Delta – Although primarily rural, the Mekong Delta is a densely populated area where life progresses around its fertile banks. The Mekong Delta is the 13th longest, and the 10th largest, by volume alone and people live, trade, travel and even go to school on the riverbanks. The rice which is cultivated in the many farming lands is said to be enough to supply the entire country with a little extra.

Day 15: Mekong Delta - Saigon

Meals: B, L

Travel to the Cho Lach district, stopping to visit Vinh Bac bonsai and a flower village. Pay a visit to Cai Nhum Cathedral before returning to Saigon.

**Day 16: Saigon – Siem Reap**

Meals: B, L, D

This morning transfer to the airport for your 1 hour and 20-minute flight to Siem Reap, gateway to the Angkor complex.



Destination Information

Siem Reap – Known as the gateway to Angkor, the architecture in Siem Reap is heavily influenced by Chinese, French and Khmer styles. Siem Reap literally translates as ‘Defeat of Siam’, a reference to a historical battle between the Khmer people and the Thai Siam people.

Day 17: Siem Reap

Meals: B, L

What better way to get around the world-famous Angkor Wat Complex than from the back of a traditional tuk tuk? You will explore Angkor Wat, the centrepiece of the Complex, before visiting Angkor Thom and the Bayon. Lastly, visit Ta Prohm, atmospherically buried deep in the jungle.



Two people plus one guide can travel in each tuk tuk. The complex can get very hot so please bring water with you and wear comfortable, light clothing. You will tour the Angkor Complex for approximately 5 hours.

This evening, watch a performance by the PHARE Cambodian Circus, an NGO which teaches street children to become internationally renowned performing artists whilst also providing them with an education.

Please note: *The Central Tower of the Angkor Wat complex is closed on Buddhist holidays and on all other days has a limited number of visitors allowed at any given time, under regulations from UNESCO. If you wish to visit this tower, you will be required to wait in the queue alongside all other visitors. The ability to do this will be determined upon the groups' schedule.*

Destination Information

PHARE Cambodian Circus - Stone carvings from ruins across Cambodia show the importance of circus arts throughout the kingdom's history. Yet when the Khmer Rouge regime banned almost all performances across the country in the 20th century, many of these arts were almost lost. PHARE was founded in 1994 as a performing arts school with a twofold mission: to revive these forgotten arts and provide vocational training to disadvantaged youths who might otherwise have a bleak future. In 2013, the school opened its Big Top tent in Siem Reap, where graduates perform nightly. Profits support the school in Battambang, which teaches a variety of arts as well as providing a formal education.

Angkor Wat – Surrounded by a 190-metre moat and taking 30 years to build, Angkor Wat represents the Khmer civilisation at its grandest. With its fascinating decorative flourishes, extensive bas-relief and multiple tiers, it is the best-preserved temple within the complex.

Angkor Thom – This fortified city is flanked by a row of 54 stone figures on each side, which leads you through a 23-metre imposing stone entrance gate to the various temples inside.

Bayon – Beautifully crafted central towers, decorated with four opposing faces representing King Jayavarman VII. Bayon's stone galleries display extraordinary bas-reliefs incorporating over 11,000 figures.

Ta Prohm – Swallowed by the jungle where Strangler Figs and Kapok Trees have entwined themselves around the ruins. Undoubtedly, the most atmospheric ruin at Angkor with several towers, closed courtyards and narrow corridors to explore.

Day 18: Siem Reap & Tonle Sap

Meals: B, L, D

Enjoy a morning cruise on Tonle Sap Lake, visiting a local village and observing the way of life of these lake communities. In the high-water season (August to February), you will also visit Kampong Khleang, a unique village on stilts. In the low water season (March to July), you will visit Chong Kneas, a floating village.



On your way back to Siem Reap, stop by the SATCHA social enterprise, before enjoying this evening's farewell dinner with an Apsara Dance Show.

Destination Information

The SATCHA Handicraft Centre – A social enterprise showcasing traditional and high-end Cambodian art. Local creators are supported with materials and training to produce their crafts such as silk and wood carvings, with many of the handicrafts available to purchase.

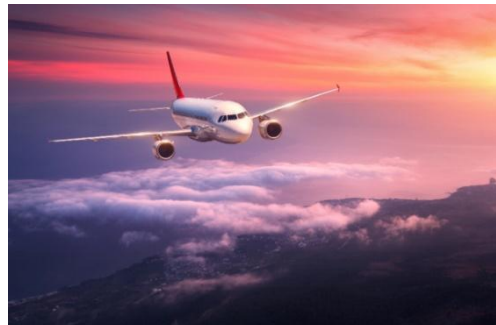
Days 19-20: Depart Siem Reap

Meals: B

You will be transferred from the hotel to the airport, according to the departure time of your international flight. Any time before your flight is at leisure.

Fly overnight, arriving in Australia the following day.

Check out is usually at noon – please contact our Reservations team if you would like to prebook Late Checkout. Please note: Only breakfast is provided on the group's day of departure.



VIETNAM & CAMBODIA DISCOVERY TRAVEL INFORMATION

VISAS:

Entry visas are required by all visitors to Vietnam & Cambodia and Wendy Wu Tours Visa Department can assist you with the process of obtaining a visa. Please be advised that your passport must have at least six months validity left on it when you arrive back into Australia.

From April 2026, all foreign nationals entering Vietnam via Saigon Tan Son Nhat Airport (SGN) are strongly encouraged by the Vietnamese government to complete a digital arrival card online before arrival. The digital arrival card system is not currently mandatory for entry into Vietnam via Tan Son Nhat Airport, but this may change or be extended to other airports in Vietnam with limited notice. If you are flying to Saigon, please complete the form within 72 hours prior to arrival at: <https://prearrival.immigration.gov.vn/>

All guests travelling to Cambodia must complete a mandatory online e-immigration application within 7 days prior to their arrival. You may complete the form via the mobile phone app called Cambodia e-Arrival (CeA), or the form can be completed online at <https://arrival.gov.kh/>

The app and the registration process are free of charge. Please see our website for more information including links to the mobile apps and web platform: <https://help.wendywutours.com.au/knowledge/cambodia-e-arrival-card>

Please note the visa procedures and requirements may change at any time. These changes are often made by the relevant embassy or consulate, Wendy Wu Tours acts as a third party and has no influence on the process of a visa.

Wendy Wu Tours does not accept responsibility for lost or undelivered items.

All information with regards to visas will be updated regularly on our website as we find visas process' are changing on regular basis. For the latest information on visa procedures, processing times and requirements, please kindly refer to our website <https://www.wendywutours.com.au/help-and-advice/passports-and-visas/>

INSURANCE:

It is a condition of your booking that you are insured for the duration of your trip. We recommend comprehensive travel insurance to cover cancellation, medical requirements, luggage, repatriations and additional expenses. At a minimum, the policy is required to cover medical requirements including medical evacuations / repatriations. The choice of insurer is yours.

We strongly suggest you purchase insurance at the time you pay your deposit. This is because cancellation fees and charges are payable from that time. We may request you to provide evidence that you have taken out and paid for a policy to comply with this condition. If you fail to provide a certificate of currency of insurance within a reasonable time after our request, then this will be deemed a cancellation by you and standard cancellation fees will apply.

EATING IN SOUTHEAST ASIA:

Southeast Asia is home to an incredibly rich food history. The local cuisine is known for its intense flavours, spices and some of the freshest ingredients you can find. In general, meals include either rice or noodles and are packed full of flavour. Lemongrass, ginger, lime leaves, coriander, fish sauce and soy sauce are used in many local dishes. Whilst Southeast Asian food has a reputation for being hot and spicy, each region actually has its own distinct characteristics. Vietnam, for example, is perhaps best known for its fresh and aromatic dishes – relying heavily on flavours from fresh herbs such as mint, basil and dill.

When dining in Southeast Asia, although some restaurants have adopted a western approach to dining, expect some restaurants to follow the traditional communal style of eating. Typically, this will mean each diner has their own small bowl and may serve themselves from a variety of shared dishes. At some local restaurants, appetizers and main courses might be served when they are ready instead of following a particular order.

Determining when it's appropriate to use chopsticks, forks or spoons can be challenging for some travellers, even other Asians, as each country has different customs. In Vietnam, dishes are normally placed in the centre and people serve food for themselves with their own chopsticks and bowl. Usually, chopsticks or other utensils are provided to scoop the food into your bowl to prevent your own chopsticks from touching the food that remains on the table. Dining in Southeast Asia is fairly casual with not too many rules. Leaving food on the plate is not considered rude.

Those with dietary requirements - just make sure to inform your booking agent of any specific requirements well in advance of your trip. Please read your travel guide, which you will receive with your final documents for more information about eating in Southeast Asia. We recommend that when it comes to Asia food, you stay open minded and try to be adventurous!

GROUP SIZE:

Most of our groups consist of 10 travellers or more and will be accompanied by a national escort. There will usually be no more than 18 travellers in a Go Beyond Tour, although you may encounter other Wendy Wu tour groups while you are travelling.

All our departures are guaranteed to operate with a minimum of 8 travellers booked (unless cancelled due to factors beyond our control). However, at our discretion we may operate departures with a smaller group size as we try to operate advertised departures wherever it is viable to do so. For groups with fewer than 10 travellers, departures will operate with local guides only.

ACCOMMODATION:

Your accommodation is selected for convenience of location, comfort or character, and can range from a business hotel in one city to a family run guesthouse in a smaller town. In more remote areas, accommodation may be of a lower standard and may not have all western amenities. Hotels are generally rated as local three to four-star standard, but please note that there is no international classification system for hotels and differences in facilities and quality do exist between Australia and South East Asia. All group tour hotels have private western bathroom facilities, air conditioning, TV and telephone. Plumbing and electricity supplies can be erratic and quite often the power in hotel rooms is turned off while guests are out of the room. If you experience any difficulty, please speak to your National Escort/Local Guide. Rest assured that all hotels used by Wendy Wu Tours are regularly inspected by our staff and our partners to ensure that standards meet your needs.

Solo travellers: If you are a solo traveller and willing to share a room, you will not have to pay a single supplement for any hotel rooms. Willing to share single travellers booking within 75 days of the first day of a group tour will be subject to availability. If no suitable match is available at time of booking you will be required to pay all single supplements.

PORTERAGE:

Please be aware that portering is not included on our tours in Southeast Asia. You will therefore need to be able to handle your own luggage within the hotel and when using transportation like trains and coaches.

TRANSPORT:

Coaches: Coaches with air conditioning are used on our group tours for city sightseeing, short excursions to the countryside and longer transfers where necessary. **However, mini buses may be used for smaller groups (under 10 passengers).** Roads in Southeast Asia have generally improved over recent years, but traffic and/or weather conditions may extend driving times. Road construction work usually covers an enormous section of road - not just one or two kilometres as you may be used to. For this reason, the timings listed in the itinerary are approximations only.

Planes: Internal flights are based on economy class, with reputable airlines.

TIPPING POLICY:

Tipping while on holiday is common in most parts of the world and Southeast Asia is no exception. However, it is not always clear who it is appropriate to tip and how much. Furthermore, travellers may not have the right amounts of cash available at the right time. In order to avoid any inconvenience Wendy Wu Tours operates a tipping policy where a stated amount is given to your national escort at the beginning of your tour and tips are disbursed to local guides and drivers throughout your tour. The amount is designed to be at a reasonable level for travellers while being fair to the local people and includes a gratuity for the national escort.

If you are travelling in a smaller group with local guides only, then tipping is paid in each destination. To be fair to the guides we ask for slightly higher amounts per traveller with small groups.

We generally find that most customers appreciate the convenience of our tipping policy but we do recognize that it may not suit everyone. However, as this is a group tour we ask that everyone follows the same protocol to be fair to other group members and to ensure smooth operation of your tour.

DEVELOPMENT IN SOUTHEAST ASIA:

Although Southeast Asia is developing quickly, it still lacks the international standards of civil infrastructure and tourist facilities. Concepts of personal responsibility are also different to those in Australia. Consequently, tourist and public facilities may not uphold the same safety standards as in Australia; for example, you may see a hole in the road without a warning sign or safety barricade. All of our suppliers meet local safety standards as a minimum. We want you to have an enjoyable holiday so we ask that you take extra care, use your common sense, refer to notices and follow advice from your National Escort or Local Guides.

PUBLIC HOLIDAYS:

If you are travelling within the below Cambodian and Vietnamese Public Holidays please note that celebrations can last a couple of days and during these times some businesses will be closed and coach, air and train travel may be affected. Tourist attractions will be open, but may be crowded. In Vietnam, Tet Holiday is 3rd- 11th February 2026; International Labour Day is on 1st May every year; Reunification Day is on 30th April every year and National Independence Day is on 2nd September every year. In Cambodia Khmer New Year is 14th – 16th April every year, the King's birthday is 14th - 15th May and the Water festival is between 23rd - 25th November in 2026 and between 12th – 14th November in 2027.

SOUVENIRS:

We want to be able to give you an opportunity to buy souvenirs, so we include some stops at museums or exhibitions which demonstrate a craft or product unique to that region with pieces available to buy. We understand that souvenir hunting is not for everyone, so we aim to take you to places, which hold local interest. We trust you will enjoy these opportunities to learn about local arts and crafts and understand their historical and cultural importance.

LUGGAGE:

All travellers are limited to two items of luggage each: a suitcase with a maximum weight of 20kg and one piece of hand luggage with a maximum weight of 5kg. It is essential that your luggage is lockable. Please note that authorities will only allow bottles onto the aircraft if they have been checked in as main baggage. Bottles in hand luggage may be confiscated.

PERSONAL EXPENSES:

You will need to take some extra money to cover drinks, laundry and souvenirs, plus any additional sightseeing that may be offered to you. Based on the advice of previous customers an approximate amount of \$300AUD per person, per week should be sufficient; however, for those that can't resist a bargain or may wish to participate in all of the optional excursions, consider allocating a higher amount.

CLIMBING STEPS:

Sightseeing at nearly all of the palaces, fortresses and some temples involves climbing quite a number of steps. These palaces were built to provide defense against potential invaders so nearly all of them stand on top of a hill, while the interiors have layers of narrow hallways and steps to slow down the advance of enemies once they were inside. The steps tend to be quite large, not level and sometimes without handrails. Hindu and Buddhist temples or pagodas also tend to be built at an elevation, as this is the most auspicious position according to ancient beliefs. This means you sometimes need to walk from the bus park to the entrance, and/or need to climb some steps inside.

People with knee or hip injuries, who have poor balance or are otherwise unable to complete these activities independently should consider the suitability of this itinerary carefully.

VACCINATIONS AND YOUR HEALTH:

We recommend that you contact either your GP or Travelvax (1300 360 164) for advice on vaccinations and travel health. Travelvax has a comprehensive website that you may also find useful www.travelvax.com.au

BEFORE YOU LEAVE:

We strongly recommend registering your travel plans with www.smartraveller.gov.au as in the event of an emergency, Australian Consular assistance will be more readily available. You can also access the Australian Government's travel advisory service for up to date information about your destination on the same website.

AFTER YOUR BOOKING:

Once you have booked with Wendy Wu Tours, you will receive a confirmation invoice including a visa application form (if applicable), and a help sheet. Your final documentation pack will be sent to you approximately 2-3 weeks prior to departure.

Updated: June 2026